



YESHWANT

PRECISION PULLEYS
& CASTINGS

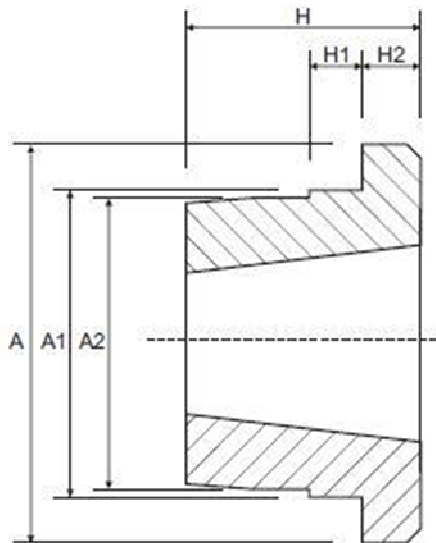


Weld-On Hubs



Weld-On Hubs

Weld-On Hubs are made of steel, drilled, tapped and taper bored to receive Tapered Bushings. They are very useful for welding into pulleys, plate sprockets, impellers, agitators and many other devices which must be firmly fastened to the shaft.



Part No.	Bush	A	A1	A2	H	H1	H2
Long Bush Design							
W12	1215	73.	63.5	62.7	38.1	9.5	15.9
W16	1615	82.6	73.	72.2	38.1	9.5	15.9
W20	2017	101.6	80.9	88.1	44.5	14.4	19.1
W25	2517	127.	111.1	110.3	44.5	12.7	19.1
W30	3030	149.9	133.4	132.6	76.2	19.1	25.4
W35	3535	184.2	158.8	158.	88.9	25.4	31.8
W40	4040	225.4	196.9	196.1	101.6	31.8	31.8
W45	4545	254.	222.3	221.5	114.3	38.1	38.1
Short Bush Design							
WH12	1210	70.	65.	64.5	25.	10.	9.
WH16	1610	80.	75.	74.5	25.	10.	9.
WH20	2012	95.	90.	89.5	32.	12.	12.
WH25	2517	115.	110.	109.5	44.	15.	19.
WH30	3020	145.	140.	139.5	50.	15.	20.
WH35	3525	190.	180.	179.5	65.	25.	25.
WH40	4040	200.	190.	189.5	101.	30.	32.
WH45	4545	210.	200.	190.5	114.	30.	40.
WH50	5050	230.	220.	219.5	127.	35.	40.

All dimensions in mm unless otherwise stated

YESHWANT CASTINGS

PRECISION PULLEYS

Yeshwant Castings

Add: 703/1 Udyambag, Belgaum, 590008
Karnataka , India

Phone : +91-830-819-6263 (INDIA)

Phone : +91-831-2442130 (INDIA)

Phone : +1-201-696-9326 (USA)

Fax : +91-20-30266266



Email : support@yeshwantcastings.com

Web : <http://www.yeshwantcastings.com>

Marketing & Promotion By -



CRESCENDO WORLDWIDE